

Last updated: March 3, 2009

Thank you for considering Px-SIM!

This document introduces you to Px-SIM's comprehensive simulation modelling and decision support concepts and features. Users report a range of process performance improvements from their Px-SIM models such as:

- reducing planning and decision cycle times
- helps meet the challenge of driving out inventory and costs
- bringing precision to Site master planning
- helping set targets for lean manufacturing
- helps meet delivery performance objectives
- increased precision, confidence and speed in your recommendations and actions

Do your 'simple' spreadsheet models fail to reflect the natural variability and complexity of interactions in your make, fill, pack and delivery processes? Soon you will see how Px-SIM allows you to self-build simulation models without expensive external experts at least 60% faster than other methods and up to 50% lower cost.

How to use this document

Before you install or start the program, we recommend reading this document in detail for the latest technical information.

This document contains the following sections:

How to use this document.....	1
Overview of Px-SIM.....	2
See Px-SIM in action	2
Unlock Px-SIM's power, speed and value.....	2
System Requirements	2
Download Instructions.....	3
Installation Process.....	3
Licensing Process	3
Using the Demo Models	4
Technical features overview	4
Contact us	4

Overview of Px-SIM

Before you start you may want to get a quick appreciation of Px-SIM's convenient modelling features by viewing the supporting videos. Just click on the link or visit our website at www.lanner.com/en/px-sim.cfm

See Px-SIM in action

To see how to use Px-SIM gives you a safe environment to improve your processes to deliver the performance targets you need, follow the step by step Model → Simulate → Understand video series.

The videos:

1. Model – fast and intuitive ways to capture your process flows and data
2. Simulate – animation of your model running forward through time
3. Understand – cause & effect, measure the consequences of natural complexity

These videos take about 8 minutes to view: click on the link below or visit our website at www.lanner.com/en/px-sim.cfm

To get new users working productively to create models in days not weeks we recommend working through the 5 tutorial modules at your own pace. You will find the tutorials in the help file once you have successfully installed Px-SIM.

Alternatively if new users prefer formal training contact Lanner to book a Px-SIM online training course or book 'on-shoulder' support as and when needed.

The training course consists of the following:

- Day 1 - Management awareness session
 - Good simulation modelling practise session
- Day 2 - Px-SIM training modules 1 & 2
- Day 3 - Px-SIM training modules 3 & 4

Both day 2 & 3 will work through how to interpret models and compare alternate scenarios around a set of standard reports such as Value stream maps, production schedules, Gantt charts, Inventory time plots and dynamic OEE calculations.

Unlock Px-SIM's power, speed and value

System Requirements

This section will help you understand the hardware and software you will need to install both this Px-SIM Evaluation edition and any Active edition in future.

Check your compatibility before attempting installation from CD or download.

Supported Windows versions:

Windows XP SP3

Windows Vista (available early 2009) Contact Lanner for more information

Dependent Software:

.Net Framework 2.0 (standard with XP SP3 or later)

Microsoft Office Visio Professional 2003

Download Size: Px-SIM Software

Approx 70MB

The software will need to be installed by a user with system administrator permissions.

A minimum of 1GB RAM required.

Download Instructions

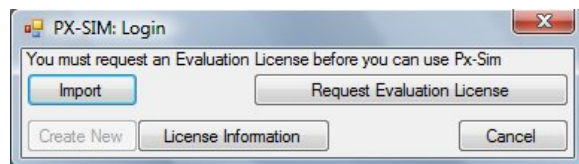
The download file for Px-SIM is available at <http://www.lanner.com/en/px-sim-download-registration.cfm>. To obtain a copy of the download, you will need to provide some simple contact details so that we can email you a link to the download area.

Installation Process

After completing the download, you will have a file on your computer named setup.exe. Run this file to install Px-SIM and all of its supporting material onto your machine. By default Px-SIM will be installed into a folder C:\Program Files\Lanner Group\PX-SIM. The Demonstration models will be installed into a folder C:\Px-SIM.

Licensing Process

The Px-SIM simulator requires a license in order to run on your machine. When you first launch Px-SIM it will check whether a license exists on your machine, and if not, follow these steps to request a license from Lanner:



1. Click Request Evaluation License
2. Enter your Organisation details
3. Click Save to File. This will save the files 'PX-SIM License Request.olcimi' and 'PX-SIM License Request.txt' to a folder you select
4. Attach these files to an e-mail that you send to px-simsupport@lanner.com
5. Wait for a response e-mail from px-simsupport@lanner.com which will contain a license file
6. Save the attached license file to a folder on your machine
7. Click the Import button on the Login form and select the saved license file

The full Terms & Conditions that apply will be displayed during the license request process.

There are two options for using Px-SIM.

A free of charge Evaluation version allows you to view pre-existing models to see the structure and process options of a model as well as the reports that represent that model run. This lets you gain an understanding of the functional richness of the tool and how the concepts might apply to your process challenges.

When you subscribe to Px-SIM you will be able to model, simulate and understand by modelling for yourself and applying all the relevant functional areas you've seen in the Evaluation version to your own processes.

For information on how to subscribe to Px-SIM visit http://www.lanner.com/en/files/px-sim_click_wrap_licence_cb130808.pdf.

Using the Demo Models

A series of Demonstration models are installed into the folder C:\Px-SIM. To open any of these models, then from within Px-SIM select the File/Open menu to bring up the Login screen. Use the ... button to navigate to C:\Px-SIM\Demo and select one of the Px-SIM Model Files. Select the User Trainee which does not have a password associated with it.

It's good to have the help file open when you first navigate around Px-SIM so that you can see the application and the help file at the same time.

Once your model is open you will see the Scenario Explorer containing the Px-SIM element tree which expands and collapses by clicking on the + and – buttons exactly as folders in Windows Explorer do.

Process data and layouts can be viewed by navigating around the element tree which follows Windows standards as described above. For more details about finding your way around a Px-SIM model, take a look at the help available by selecting the Help/Contents menu.

To analyse and understand how the simulated process has performed select the automatically generated reports available within the Reports menu.

Technical features overview

To gain a more comprehensive understanding we recommend that you review the modelling functionality matrix in the installed Help document. This document cross-references all the main modelling features of Px-SIM with the demonstration models. Keep the help file open when you install Px-SIM to explore all the Px-SIM features and worked business case examples.

Contact us

Please do not hesitate to contact us at px-sim@lanner.com if you require further clarification or call Steve Hemsley +44(0)1527 403400